

29er

49er FX

49er

Vaikobi 9er NSW State Championship 2024

9^{NSW}
ers



Woollahra
Sailing Club

16th - 17th November 2024 Woollahra Sailing Club

SAILING INSTRUCTIONS

The notation (DP) in a rule in the SI's means that the penalty for a breach of that rule may, at the discretion of the protest committee, be less than disqualification.

The Organising authority will be Woollahra Sailing Club conjunction with the NSW & ACT 9er Class Association and conducted under the authority of Australian Sailing (AS).

1 RULES

- 1.1 The regatta will be governed by the rules as defined in the current Racing Rules of Sailing.
- 1.2 The Prescriptions and Special Regulations of Australian Sailing (AS) – Part 2 will apply.

2 NOTICES TO COMPETITORS

Notices to competitors will be posted on the official notice board located downstairs foyer at Woollahra Sailing Club (WSC).

3 CHANGES TO SAILING INSTRUCTIONS

Any change to the sailing instructions will be posted at least 1.5 hours prior to the scheduled start time on the day it will take effect, except that any change to the schedule of races will be posted by 1800 hours on the day before it will take effect.

4 SIGNALS MADE ASHORE

- 4.1 Signals made ashore will be displayed on the Flagpole in the rigging grounds of WSC.
- 4.2 When flag AP is displayed ashore, '1 minute' is replaced with 'not less than 30 minutes' in the race signal AP.

9^{NSW}
ers

Vaikobi
OCEAN PERFORMANCE

 DeckHardware
MARINE SOLUTIONS AUSTRALIA

 Unlimited
Rope Solutions

 allen

 PROtect tapes



Woollahra
Sailing Club

29er

49er FX

49er

5 SCHEDULE OF RACES

5.1 Round: Woollahra Sailing Club

Registration Saturday 16 th November 2024	1030hrs to 1130hrs	For all classes.
Competitor Briefing Saturday 16 th November 2024	1130hrs	For all classes.
Racing Sat 16 th November 2024	The first warning signal for the first race will not be before 1300hrs	Race schedule as per Sailing Instructions
Racing Sunday 17 th November 2024	The first warning signal for the first race will not be before 900hrs	No warning signal will be after 1700hrs

- 5.2 Race days requiring multiple races will normally be sailed in back-to-back format with subsequent races starting as soon as possible after the finish of previous races.
- 5.3 No more than 4 races will be sailed in any one day.
- 5.4 On the last day of the regatta no warning signal will be made after 1700 hours.

SCHEDULED NUMBER OF RACES

Class	No. of Races	Number Races / day
29er/49erFX/49er	6 (total)	Max of 4/day

6

CLASS FLAGS

29er class: Red flag with a white 29er symbol
 & 49erFX class: Light Blue flag with a Blue 49er symbol

7

RACING AREAS

Round : Will be on the waters of Sydney Harbour East of Fort Denison and West of the Sow & Pigs. Refer to the diagram in Attachment “B”



Woollahra Sailing Club

29er

49er FX

49er

8 THE COURSES

- 8.1 The diagrams in Attachment “A” show the course, including the approximate angles between legs, the order in which marks are to be passed and the side on which each mark is to be left.
- 8.2 The course to be sailed will be indicated on the Start Boat, on or before the Warning Signal using a Course Board or Numeral Flag where:
Course 2 will be signaled with Numeral Flag 2
Course 3 will be signaled with Numeral Flag 3

9 MARKS

- 9.1 Marks 1, 2p, and 2s will be red & yellow inflatable marks. Mark 1a will be a yellow inflatable mark.
- 9.2 The starting mark will be a white inflatable mark.
- 9.3 The finishing mark will be a blue inflatable mark.

10 AREAS THAT ARE OBSTRUCTIONS

The shoreline and moored boats may be designated as obstructions.

11 THE START

- 11.1 Races will be started by using rule 26 with the warning signal made 5 minutes before the starting signal.
- 11.2 The starting line will be between staff displaying an orange flag on the committee vessel and the starting mark.
- 11.3 Boats whose warning signal has not been made shall avoid the starting area during the starting sequence for other races. (DP)
- 11.4 A boat starting later than 4 minutes after her starting signal will be scored Did Not Start without a hearing. This changes rule A4.

12 CHANGE OF THE NEXT LEG OF THE COURSE

Courses will not be changed after the start.

13 THE FINISH

The finishing line will be between a staff displaying blue flag on the finishing boat and the finishing mark.

14 PENALTY SYSTEM

- 14.1 Rule 44.1 is changed so that the Two-Turns Penalty is replaced by the One-Turn Penalty.

15 TIME LIMITS AND TARGET TIMES

- 15.1 The time limit for each race is 45 minutes with a target time of 30 minutes. If no boat has passed the first mark (1 or 1a) within 15 minutes of the start, the race will be abandoned. Failure to meet the target time will not be grounds for redress. This changes rule 62.1(a).
- 15.2 Boats failing to finish within 10 minutes after the first boat sails the course and finishes will be scored Did Not Finish without a hearing. This changes rules 35, A4 and A5.

29er

49er FX

49er

16 PROTESTS AND REQUESTS FOR REDRESS

- 16.1 Protest forms are available at the race office, located at WSC. Protests and requests for redress or reopening shall be delivered there within the appropriate time limit.
- 16.2 The protest time limit is 60 minutes after the last boat has finished the last race of the day.
- 16.3 Notices will be posted no later than 30 minutes after the protest time limit to inform competitors of hearings in which they are parties or named as witnesses and the time and location of the hearing
- 16.4 Notices of protests by the race committee or protest committee will be posted to inform boats under rule 61.1(b).
- 16.5 Breaches of instructions 11.3, 18, 21, 26, 27, and 28 will not be grounds for a protest by a boat. This changes rule 60.1(a). Penalties for these breaches may be less than disqualification if the protest committee so decides. The scoring abbreviation for a discretionary penalty imposed under this instruction will be DPI.
- 16.6 On the last scheduled day of racing a request for reopening a hearing shall be delivered
 - (a) Within the protest time limit if the requesting party was informed of the decision on the previous day;
 - (b) No later than 30 minutes after the requesting party was informed of the decision on that day. This changes rule 66.
- 16.7 On the last scheduled day of racing a request for redress based on a protest committee decision shall be delivered no later than 30 minutes after the decision was posted. This changes rule 62.2.

17 SCORING

For All 9er Classes:

- 17.1 The low point scoring system as described in Appendix A of RRS will be used.
- 17.2 A maximum of 8 races are scheduled to be completed, 4 races shall constitute a series. (This amends Appendix A1)
- 17.3 Series Scores: (This amends Appendix A2)
 - (a) When there are 3 or fewer races completed, a boat's series score will be the total of her race scores.
 - (b) When from 4 to 8 races have been completed, a boat's series score will be the total of her race scores excluding her worst score.

18 SAFETY REGULATIONS

- 18.1 All skippers are required to sign on the provided sheet at WSC prior to starting the first race of the day. Failure to do so will result in the competitor being scored as a DNC for the first race of the day. This changes RRS Appendix A A4.1
- 18.2 All skippers are required to sign off the provided sheet at WSC within 60 minutes of the last competitor finishing the last race of the day. Failure to do so will result in the competitor being scored as a DNC for the last race of the day. This changes RRS Appendix A A4.1
- 18.3 A boat that retires from a race shall notify the race committee as soon as possible.

29er

49erFX

49er

19 REPLACEMENT OF CREW OR EQUIPMENT

- 19.1 Substitution of helmsperson will not be allowed.
- 19.2 Substitution of crew will not be allowed without prior written approval of the race committee. (DP)
- 19.3 Substitution of damaged or lost equipment will not be allowed unless authorised by the race committee. Requests for substitution shall be made to the committee at the first reasonable opportunity. (DP)

20 EQUIPMENT AND MEASUREMENT CHECKS

A boat or equipment may be inspected at any time for compliance with the class rules and sailing instructions. On the water, a boat can be instructed by a race committee equipment inspector or measurer to proceed immediately to a designated area for inspection.

21 ADVERTISING

Boats may be required to display advertising supplied by the organising authority and bow numbers as advised at registration. (DP)

22 OFFICIAL BOATS

Round: Official boats will be flying a WSC Club Burgee.

23 PRIZES

Prizes will be given as follows:

29er, 49erFX & 49er

- 1st – 3rd on Scratch Overall.

29ers

- 1st Youth Team (Not attain their 19th birthday by the 31st December 2024 – both skipper and crew)
- 1st Junior Team (Not attain their 17th birthday by the 31st December 2024 – both skipper & crew)
- 1st Female Skipper (with male crew)
- 1st All Female Team
- 1st Mixed Crew (Female and Male)

Further prizes may be awarded at the discretion of the organising authority.

24 DISCLAIMER

- 24.1 It is the competitor's decision to enter an Event or to start and continue in any race. Competitors shall accept that their participation in an Event is at their exclusive risk in every respect. See Racing Rule 4, Decision to Race.
- 24.2 None of the Organising Authority, Australian Sailing, their officers, members, volunteers, servants or agents accept any responsibility whatsoever in respect of loss of life, personal injury or damage to property which may be sustained by reason of their participation or intended participation in this event or howsoever arising in connection with the event.

29er

49er FX

49er

25 INSURANCE

Each participating boat shall be insured with valid third-party liability insurance with a minimum cover of \$10,000.000 per event or the equivalent.

26 SUPPORT BOATS

23.1 Team leaders, coaches and other support personnel shall stay at least 100 metres away from areas where boats are racing from the time of the preparatory signal for the first class to start until all boats have finished or retired or the race committee signals a postponement, general recall or abandonment. (DP)

23.2 All coach boats, support boats and parent boats shall be on standby on CH VHF 77 if required by the organising authority to assist in any rescue or emergency situation.

27 RADIO COMMUNICATION

Except in an emergency, a boat shall neither make radio transmissions while racing nor receive radio communications not available to all boats. This restriction also applies to mobile telephones. (DP)

28 RUBBISH DISPOSAL

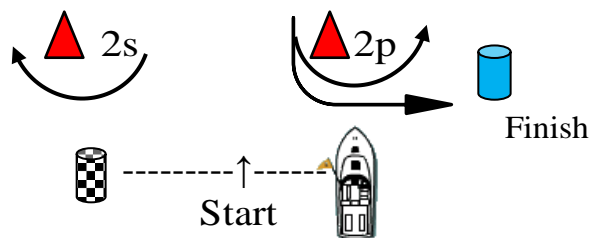
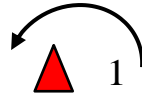
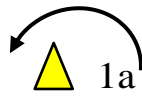
Boats shall not put rubbish in the water. Rubbish may be placed aboard support and race committee boats. (DP)

29er

49erFX

49er

Attachment A:
Windward-Leeward Course (Downwind finish)



Course 2

29ers

Start, 1, 2s/2p, 1, 2p, Finish

49ers & 49erFX

Start, 1a, 2s/2p, 1a, 2p, Finish

Course 3

29ers

Start, 1, 2s/2p, 1, 2s/2p, 1, 2p, Finish

49ers & 49erFX

Start, 1a, 2s/2p, 1a, 2s/2p, 1a, 2p, Finish

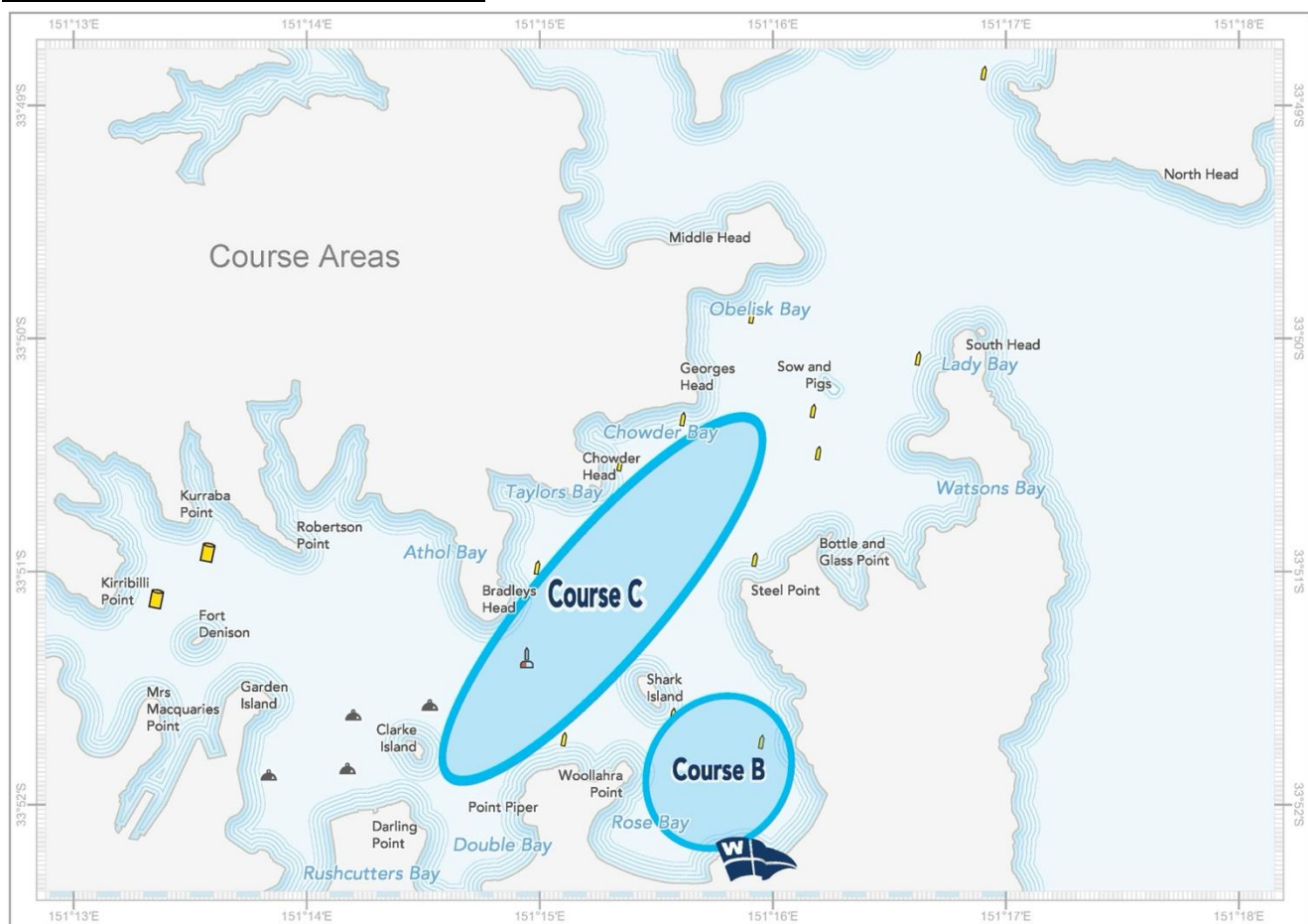
- A.1 Marks 1 or 1a are to be taken to port by the respective classes.
- A.2 Marks 2s and 2p are gate marks and boats are required to pass between them on each downwind leg except on the final downwind leg toward the finish.
- A.3 If only one gate mark is in position, it shall be rounded to port.

29er

49er FX

49er

Attachment "B" Course Areas



Vaikobi
OCEAN PERFORMANCE

9 NSW
ers

DeckHardware
MARINE SOLUTIONS AUSTRALIA

Unlimited
Rope Solutions

allen

PROtect tapes



Woollahra
Sailing Club